



Technique:	Sewing
Designed By:	Linda Turner Griepentrog
Skill Level:	Experienced Beginner
Crafting Time:	Weekend
Finished size:	Custom to fit your chairs (the featured project fits a chair back that's 16" (40.64cm) across and 17 3/4" (45.09cm) tall.

Featuring Coats Dual Duty XP®

Add a little flurry to your holiday decorating with our stocking-capped snow people. Top your chair backs for a fun holiday table decoration.

Supplies *(per pair)*

- Coats Dual Duty XP® All-purpose threads
- Coats® Eclectic Elements Craft Thread by Tim Holtz
- Hat fabrics are from *FreeSpirit Fabrics Holiday Homies* by Tula Pink fabric collection.
- 1 1/4 yd (1.14m) white poplin
- 1/2 yd (22.86cm) PWTP105.0HOLL, Check Yo'self, Holly Berry
- 1/2 yd (22.86cm) PWTP108.0INKX, Peppermint Stars, Ink
- 1/8 yd (11.43cm) orange fabric
- 5/8 yd red ribbon, 7/8" (2.22cm)
- 5/8 yd black dot ribbon, 7/8" (2.22cm)
- (4) buttons for eyes, 1" (2.54cm)
- (5) buttons for mouth, 5/8" (57.15cm)
- (2) pom poms, 3" (7.62cm)
- Paper-back fusible web
- Powdered blush (optional)

Preparation

Measure the height and width of the chair backs. Add 2" (5.08cm) to the width measurement, and ½" (1.27cm) to the height measurement of where you want the cover to end. Adjust yardage required if needed.

Cutting

From the white poplin, cut:

- (4) rectangles, 16½" x 18" (41.91cm x 45.72cm)
- (2) rectangles, 9½ x 18" (24.13cm x 45.72cm)

From each hat print fabric, cut:

- (1) rectangle, 6½" x 18" (16.51cm x 45.72cm)
- (2) hat points, using the pattern provided

Seam allowances are ¼" (.64cm).

Assembling the Front *(repeat for each cover being made)*

1. With right sides together, sew the hat point sides, leaving the top open. Clip the corner, turn and press the edges. Set aside.
2. Using the chin template provided, round the lower corners of both large white poplin rectangles. Align the straight edges with the rectangle edges.
3. Overlay the hat rectangle right side up onto the poplin rectangle upper edge. Baste the edges in place.
4. Overlay the ribbon over the lower raw edge of the hat fabric and edgestitch both sides in place. Trim the excess ribbon length.
5. Matching the raw edges, baste the hat point in place on one side of the upper front edge, 3/8" (.96cm) from the side edge.

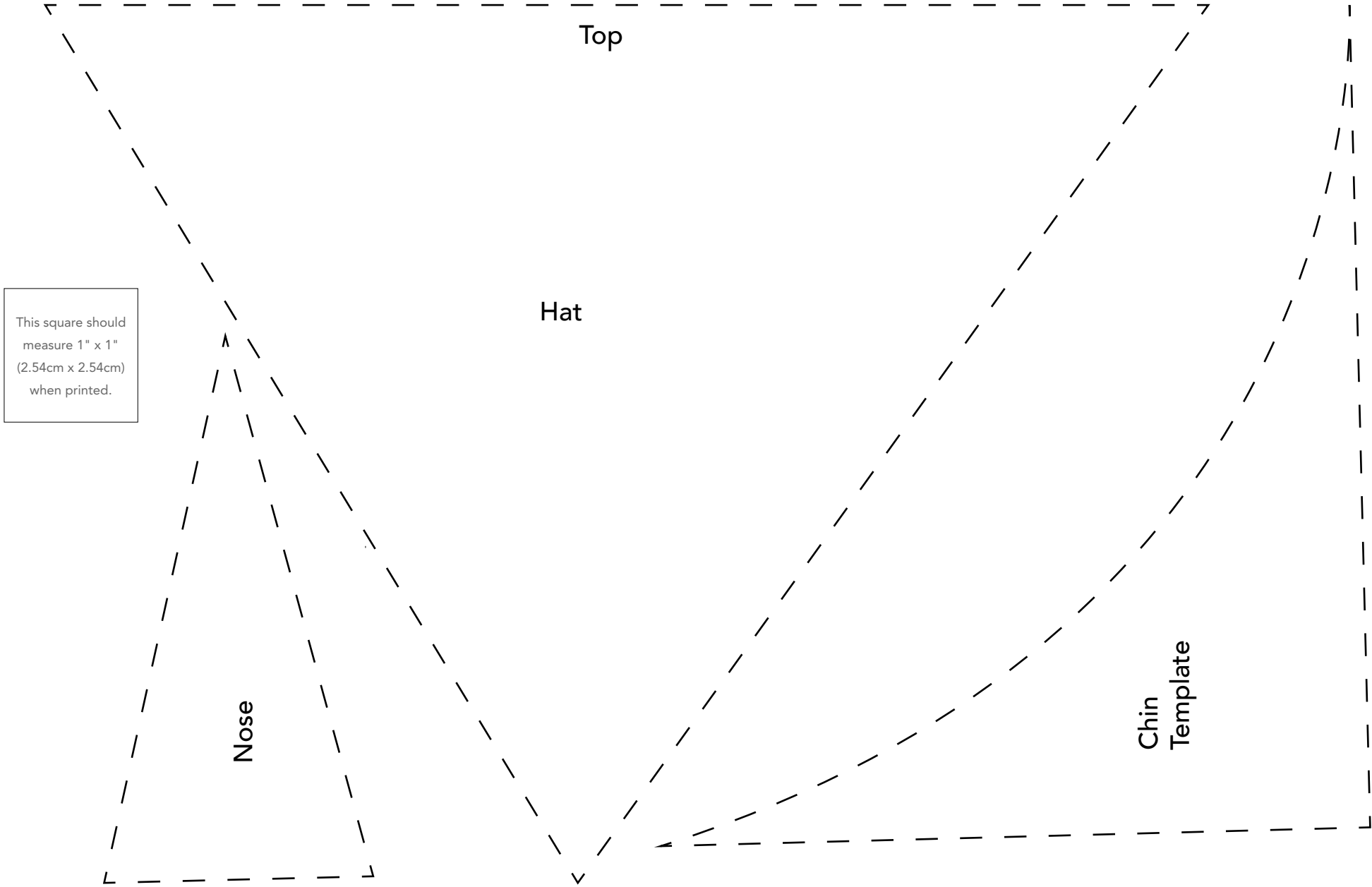
6. Trace the nose pattern onto fusible web, rough-cut the shape and fuse to the orange fabric wrong side. Trim along the drawn line. Position the carrot nose as desired and appliqué the edges in place using a narrow zigzag stitch.
7. Position the large eye buttons as desired and stitch in place using Craft Thread.
8. For the button mouth, sew the five smaller buttons in a curve shape using Craft Thread. For the stitched mouth, trace a semi-circle using a plate or circle template and use a double strand of Craft Thread to make big stitches along the line.
9. Place the second front white poplin rectangle right sides together with the embellished front, matching the lower edges.
10. Sew around the lower curve up to the lower ribbon edge. Trim the seam to ¼" (.32cm), turn right side out, shape the curve, and press the edges. Baste the upper edges in place.

Assembling the Back

1. Turn under one long edge to form a ¼" (.64cm) double hem; stitch in place.
2. Place the back right sides together with the upper front edges matching. Note that the hat point is sandwiched between the layers. Sew both sides and across the top. At both lower edges, taper the seam to the finished edge.
3. Trim the seam allowances and clip the corners, then zigzag the raw edges together. Turn right side out. Press the edges firmly.

Finishing

1. Hand-stitch the pom-pom to the hat point.
2. If desired, use powdered blush to create some rosy cheeks.



Top

Hat

Nose

Chin
Template

This square should
measure 1" x 1"
(2.54cm x 2.54cm)
when printed.

*** Measure templates before cutting to confirm printing at 100%***